



**Government of India
Ministry of Earth Sciences
India Meteorological Department**



Press Release

Date: 23rd July, 2025

Time of Issue: 1300 hours IST

Subject: i) Heavy to very heavy rainfall likely over Kerala, Karnataka, Coastal Andhra Pradesh, Telangana, Konkan & Goa, Madhya Maharashtra, Madhya Pradesh, Vidarbha & Chhattisgarh during next 6-7 days with extremely heavy falls over Coastal Karnataka during 23rd-25th; Konkan & Goa and ghat areas of Madhya Maharashtra on 24th & 25th July.
ii) Heavy to very heavy rainfall also likely over eastern & central parts of the country (Gangetic West Bengal, Odisha, Jharkhand) during 24th -28th July with extremely heavy falls over Odisha on 25th July.

Realised weather during past 24 hours till 0830 hours IST of today, the 23rd July, 2025:

- ❖ **Heavy to very heavy rainfall with extremely heavy falls (≥ 21 cm)** has been recorded at isolated places over Telangana.
 - ❖ **Heavy to very heavy rainfall (7-20 cm)** has been recorded at isolated places over Coastal Karnataka, West Madhya Pradesh, northeast Rajasthan, Uttarakhand, Konkan, Madhya Maharashtra; **Heavy rainfall (7-11 cm)** at isolated places over Jammu-Kashmir, Punjab, Odisha, Gujarat Region, Goa, Vidarbha, Chhattisgarh, Bihar, South Interior Karnataka and Kerala.
- For more details of realised weather, kindly refer [Annexure I](#).**

i. Weather Systems, Forecast and Warnings (refer to [Annexure II & III](#)):

- ❖ The western end of monsoon trough at mean sea level runs north of its normal position and eastern end near its normal position.
- ❖ An upper air cyclonic circulation lies over southwest Rajasthan in lower tropospheric levels.
- ❖ A Western Disturbance as a cyclonic circulation lies over Jammu & Kashmir and adjoining Himachal Pradesh in lower & middle tropospheric levels.
- ❖ An upper air cyclonic circulation lies over northeast Assam & neighbourhood in lower tropospheric levels.
- ❖ An upper air cyclonic circulation lies over westcentral and adjoining northwest Bay of Bengal in lower & middle tropospheric levels.
- ❖ A cyclonic circulation (Remnant of Tropical Cyclone WIPHA) is likely to emerge over **north Bay of Bengal** during next 24 hours. Under its influence, a **Low Pressure area** is likely to form over the same region during subsequent 24 hours.
- ❖ A trough runs from Northeast Arabian Sea to the cyclonic circulation over westcentral & adjoining northwest Bay of Bengal in middle tropospheric levels.

Under the influence of these systems, the following weather is likely:

South Peninsular India:

- ✓ **Extremely heavy falls** very likely at isolated places over Coastal Karnataka during 23rd-25th July.
- ✓ Isolated **heavy to very heavy rainfall** likely over Kerala & Mahe, Coastal & South Interior Karnataka, Coastal Andhra Pradesh & Yanam during 23rd-29th; isolated **heavy rainfall** over Tamil Nadu, Telangana during 23rd-27th July with isolated **very heavy rainfall** over Telangana on 23rd & 24th July.
- ✓ **Strong surface winds** (speed reaching 40-50 kmph) very likely over South Peninsular India during next 5 days.
- ✓ Light to moderate rainfall at most/many places over Kerala & Mahe, Lakshadweep, Karnataka, Rayalaseema, Coastal Andhra Pradesh & Yanam and Telangana during next 7 days.

West India:

- ✓ **Extremely heavy falls** very likely at isolated places over Konkan and Ghat areas of Madhya Maharashtra on 24th & 25th July.
- ✓ **Heavy to very heavy rainfall** likely at isolated to some places over Konkan & Goa, Ghat areas of Madhya Maharashtra during 23rd-29th July and **heavy rainfall** over Marathwada on 26th; Gujarat region during 23rd-29th; Saurashtra & Kutch during 26th-29th July with isolated **very heavy rainfall** over Gujarat Region on 27th & 28th July.
- ✓ Light to moderate rainfall at many places very likely over the region during next 5 days.

East & Central India:

- ✓ **Extremely heavy falls** very likely at isolated places over Odisha on 25th July.
- ✓ Isolated **heavy rainfall** very likely to continue over Madhya Pradesh, Vidarbha, Chhattisgarh, Odisha during 23rd-28th; Gangetic West Bengal, Bihar, Jharkhand during 24th-28th; Sub-Himalayan West Bengal & Sikkim during 25th-27th July with isolated **very heavy rainfall over West Madhya Pradesh during 26th-28th; East Madhya Pradesh during 25th-28th; Vidarbha, Jharkhand during 25th-27th; Chhattisgarh, Odisha during 24th-26th; Gangetic West Bengal on 24th & 25th July.**
- ✓ Light to moderate rainfall at most places accompanied with thunderstorm, lightning & gusty winds (speed reaching 30-40 Kmph) likely over the region during next 7 days with **moderate lightning over Bihar on 24th & 25th July.**

Northwest India:

- ✓ Isolated **heavy rainfall** likely over Jammu and Kashmir on 23rd & 24th and during 27th-29th; Himachal Pradesh on 23rd; during 27th-29th; Uttarakhand during 23rd-29th; Punjab, Haryana on 23rd, 24th & 28th; West Uttar Pradesh on 23rd, during 26th-29th; East Uttar Pradesh during 25th-28th; West Rajasthan during 27th-29th and East Rajasthan on 23rd and during 26th-29th July with **very heavy rainfall over Jammu-Kashmir on 23rd and East Rajasthan on 27th & 28th July.**
- ✓ Light/moderate rainfall at many places accompanied with thunderstorm, lightning likely over Western Himalayan region and some places over the plains during next 7 days.

Northeast India:

- ✓ Light/moderate rainfall at many places accompanied with **thunderstorm, lightning and isolated heavy rainfall** likely to continue over Northeast India during next 7 days.

Fishermen Warnings:

Fishermen are advised to avoid venturing into the following from 23rd July to 28th July 2025 to the following Areas:

- ❖ **Arabian Sea:** Along and off Gujarat, Konkan, Goa, Karnataka, Kerala coasts and adjoining sea area; over Lakshadweep, Maldives, Comorin areas, many parts of southeast, eastcentral, northeast Arabian Sea & adjoining areas of southwest, westcentral Arabian Sea; along and off the Somalia coast and adjoining sea areas, south Oman and adjoining Yemen coast & adjoining sea areas; parts of north Arabian Sea adjoining to central Arabian Sea during 23rd to 28th July.
- ❖ **Bay of Bengal:** South and Central Bay of Bengal along and off Tamil Nadu, Andhra Pradesh coasts; Gulf of Mannar, Andaman Sea for 23rd to 28th July; Odisha, Gangetic West Bengal, Bangladesh, Myanmar coasts ;north Bay of Bengal during 24th to 28th July;

ii. Weather conditions and forecast over Delhi/NCR during 23rd to 26th July, 2025 (Annexure IV)

For more details, kindly refer National Weather Bulletin:

https://mausam.imd.gov.in/responsive/all_india_forecast_bulletin.php

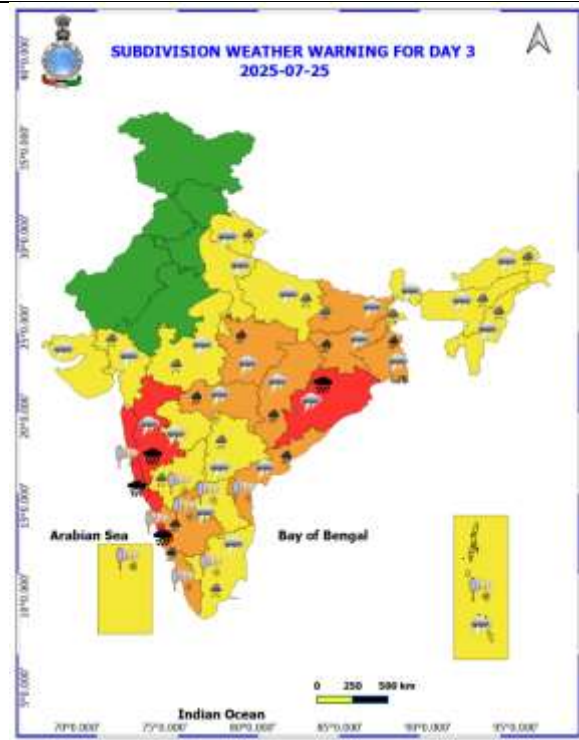
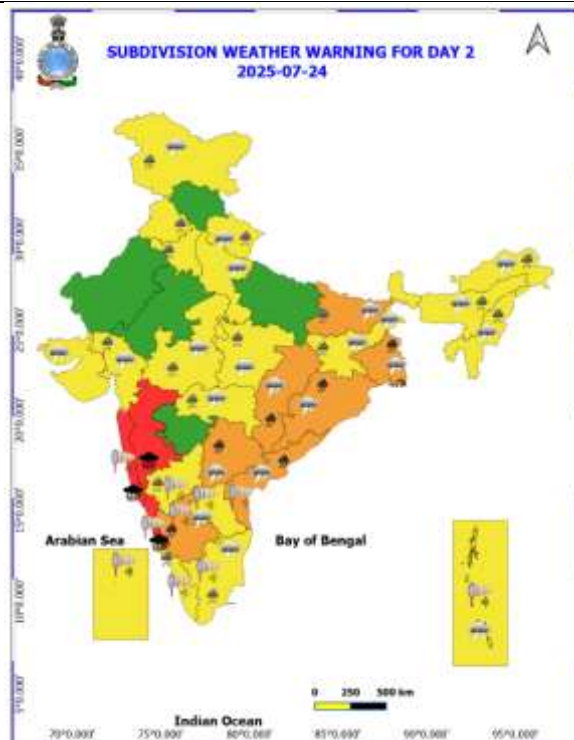
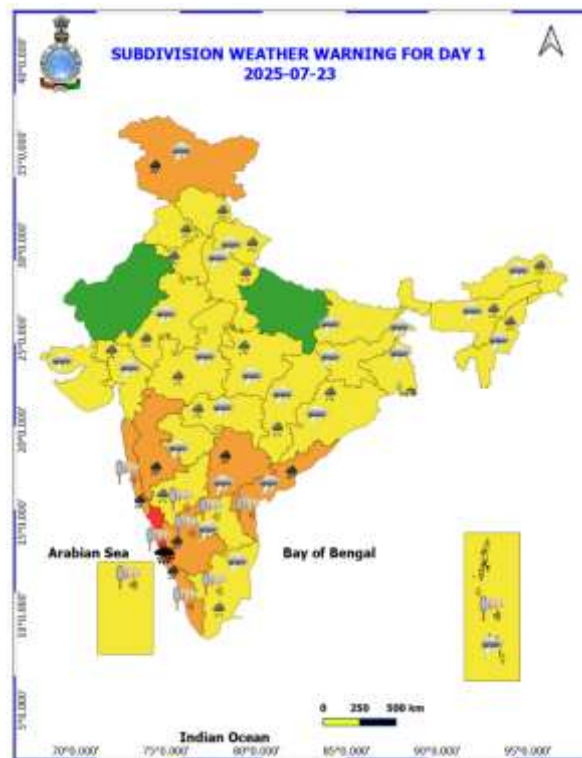
For District wise warnings refer: <https://mausam.imd.gov.in/responsive/districtWiseWarningGIS.php>

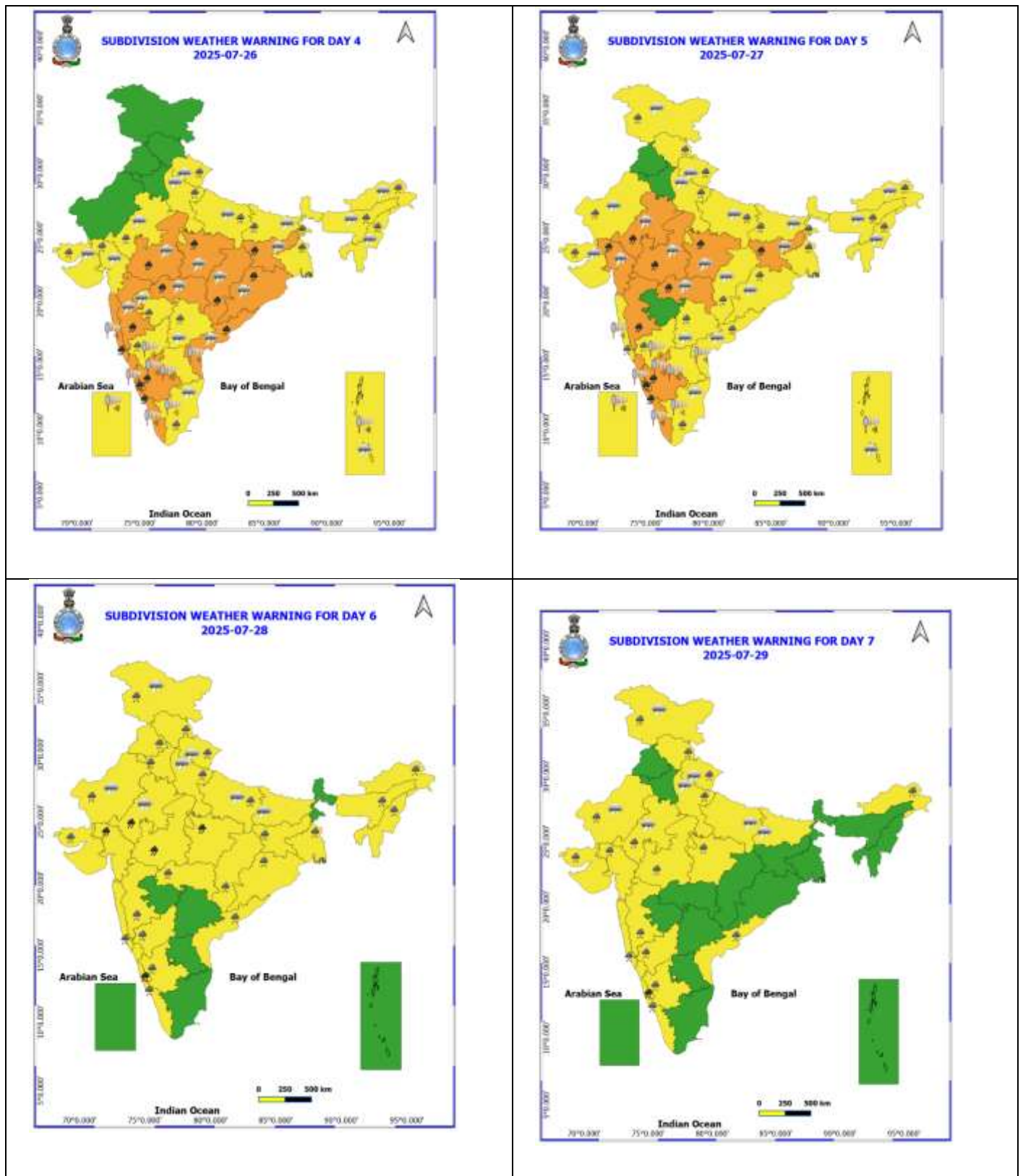
Rainfall recorded (in cm) during past 24 hours till 0830 hours IST of today, the 23rd July:

- ❖ **Telangana:** Venkatapuram (dist Mulugu) 26; Manuguru (dist B. Kothagudem) 19; Govindaraopet (dist Mulugu) 15; Eturnagaram (dist Mulugu) 12; Bheemadevarpalle (dist Hanumakonda), Madhira (dist Khammam) 11 Each; Mogullapalle (dist J. Bhupalpally), Suryapet (dist Suryapet), Venkatapur (dist Mulugu), Bheemini (dist Mancheria), Noothankal (dist Suryapet) 10 Each; Chennaraopet (dist Warangal), Pinapaka (dist B. Kothagudem), Kothaguda (dist Mahabubabad), Jammikunta (dist Karimnagar), Srirampur (dist Peddapalle), Mothey (dist Suryapet) 9 Each; Sarangapur (dist Jagtial), Mustabad (dist Rajanna Sircilla), Kusumanchi (dist Khammam), Karimnagar AP (dist Karimnagar), Aswapuram (dist B. Kothagudem), Dharmaram (dist Peddapalle), Ramayampet (dist Medak), Tekulapalle (dist B. Kothagudem) 8 Each; Gudurwrgl (dist Mahabubabad), Garla (dist Mahabubabad), Gambhiraopet (dist Rajanna Sircilla), Gundala (dist B. Kothagudem), Shayampet (dist Hanumakonda), Elagaid (dist Peddapalle), Kodada (dist Suryapet), Chityal (dist J. Bhupalpally), Ghanpurjskb (dist J. Bhupalpally), Jaipur (dist Mancheria), Julapalle (dist Peddapalle) 7 Each;
- ❖ **Coastal Karnataka:** Manki (dist Uttara Kannada) 19; Kumta (dist Uttara Kannada) 16; Karwar (dist Uttara Kannada) 15; Gersoppa (dist Uttara Kannada) 14; Shirali PTO (dist Uttara Kannada) 13; Honavar (dist Uttara Kannada) 11; Gokarna (dist Uttara Kannada), Sulya (dist Dakshina Kannada) 8 Each; Siddapura (dist Udupi), Kota (dist Udupi) 7 Each;
- ❖ **Konkan & Goa:** Roha (dist Raigad) 16; Tala (dist Raigad) 15; Shriwardhan (dist Raigad), Murud (dist Raigad), Ratnagiri (dist Ratnagiri), Pen (dist Raigad), Kankavli (dist Sindhudurg) 12 Each; Mangaon (dist Raigad), Mormugao - Pmo IMD (dist South Goa), Alibag - IMD Part Time (dist Raigad), Mhasla (dist Raigad), Dabolim N.a.s.- Navy (dist South Goa), Rajapur (dist Ratnagiri), Savarde-arg (dist Ratnagiri) 11 Each; Awalegaon - ARG (dist Sindhudurg), Panjim (dist North Goa), Lanja (dist Ratnagiri) 10 Each; Sudhagad Pali (dist Raigad), Ponda (dist North Goa), Guhagarh (dist Ratnagiri), Colaba (dist Mumbai City), Canacona (dist South Goa), Devgad (dist Sindhudurg), Dapoli ARG (dist Ratnagiri), Wakwali ARG (dist Ratnagiri) 9 Each; Santacruz (dist Mumbai Suburban), Harnai IMD (dist Ratnagiri), Kudal (dist Sindhudurg), Margao (dist South Goa), Sangameshwar Devrukh (dist Ratnagiri) 8 Each; Khed (dist Ratnagiri), Uran (dist Raigad), Mapusa (dist North Goa), Vaibhavwadi (dist Sindhudurg), Poladpur (dist Raigad) 7 Each;
- ❖ **East Rajasthan:** Pilani (dist Jhunjhunu) 14; Bahadurpur SR (dist Alwar) 11; Mandawar (dist Alwar), Alwar Obs (dist Alwar) 10 Each; Chirawa (dist Jhunjhunu) 9; Ramgarh SR (dist Alwar) 7;
- ❖ **West Madhya Pradesh:** Jharda (dist Ujjain) 12; Barod (dist Agar-malwa) 10; Ichhawar (dist Sehore) 8; Guna-aws (dist Guna), Godadongri (dist Betul), Moman Badodiya (dist Shajapur) 7 Each;
- ❖ **Uttarakhand:** Didihat (dist Pithoragarh) 12; Dharchula (dist Pithoragarh) 9;
- ❖ **Gujarat Region:** Jalalpor (dist Navsari) 10; Navsari (dist Navsari) 9;
- ❖ **South Interior Karnataka:** Agumbe AWS (dist Shivamogga) 10;
- ❖ **Chhattisgarh:** Usoor (dist Bijapur) 10; Bhairamgarh (dist Bijapur) 9; Sukma (dist Sukma) 7;
- ❖ **Madhya Maharashtra:** Lonavala ARG (dist Pune) 9; Mahabaleshwar (dist Satara) 8; Gaganbawada (dist Kolhapur) 7;
- ❖ **Kerala & Mahe:** Peermade To (dist Idukki) 9; Kudulu (dist Kasargod), Kayamkulam ARG (dist Alapuzha) 7 Each;
- ❖ **Punjab:** Jagraon (dist Ludhiana) 9; Malikpur (dist Pathankot) 8;
- ❖ **Bihar:** Ghanshyampur (dist Darbhanga), Tardih (dist Darbhanga) 8 Each;
- ❖ **Odisha:** Dunguripalli (dist Sonepur) 7.

Table-1								
7 Days Rainfall Forecast								
S.No.	Subdivision	23- Jul	24- Jul	25- Jul	26- Jul	27- Jul	28- Jul	29- Jul
		Day 1	Day 2	Day 3	Day 4	Day 5	Day 6	Day 7
1	ANDAMAN & NICOBAR ISLANDS	WS	FWS	FWS	FWS	FWS	SCT	FWS
2	ARUNACHAL PRADESH	SCT	SCT	FWS	FWS	FWS	FWS	FWS
3	ASSAM & MEHGHALAYA	FWS	FWS	FWS	WS	WS	FWS	FWS
4	NAGALAND, MANIPUR, MIZORAM AND TRIPURA	FWS	FWS	FWS	FWS	WS	FWS	SCT
5	SUB HIMALAYAN WEST BENGAL & SIKKIM	FWS	WS	FWS	FWS	WS	WS	FWS
6	GANGETIC WEST BENGAL	SCT	WS	WS	WS	WS	WS	FWS
7	ODISHA	FWS	WS	WS	WS	WS	FWS	FWS
8	JHARKHAND	SCT	FWS	WS	WS	WS	WS	FWS
9	BIHAR	ISOL	SCT	FWS	FWS	SCT	SCT	SCT
10	EAST UTTAR PRADESH	ISOL	SCT	FWS	FWS	FWS	SCT	SCT
11	WEST UTTAR PRADESH	SCT	ISOL	FWS	SCT	FWS	FWS	FWS
12	UTTARAKHAND	FWS	FWS	FWS	FWS	FWS	FWS	FWS
13	HARYANA, CHANDIGARH & DELHI	FWS	FWS	ISOL	ISOL	SCT	FWS	FWS
14	PUNJAB	FWS	FWS	ISOL	ISOL	ISOL	FWS	FWS
15	HIMACHAL PRADESH	FWS	SCT	SCT	FWS	WS	WS	FWS
16	JAMMU AND KASHMIR AND LADAKH	WS	FWS	SCT	SCT	FWS	FWS	SCT
17	WEST RAJASTHAN	ISOL	ISOL	ISOL	SCT	SCT	FWS	FWS
18	EAST RAJASTHAN	FWS	SCT	SCT	FWS	FWS	FWS	FWS
19	WEST MADHYA PRADESH	FWS	FWS	WS	WS	WS	WS	WS
20	EAST MADHYA PRADESH	FWS	WS	WS	WS	WS	WS	WS
21	GUJRAT REGION	FWS	FWS	FWS	FWS	WS	WS	WS
22	SAURASHTRA & KUTCH	SCT	SCT	SCT	FWS	WS	WS	WS
23	KONKAN & GOA	WS	WS	WS	WS	WS	WS	WS
24	MADHYA MAHARASHTRA	FWS	FWS	FWS	FWS	FWS	FWS	SCT
25	MARATHWADA	SCT	SCT	SCT	ISOL	ISOL	ISOL	ISOL
26	VIDARBHA	WS	WS	WS	WS	WS	FWS	FWS
27	CHHATTISGARH	WS	WS	WS	WS	WS	FWS	FWS
28	COASTAL ANDHRA PRADESH	FWS	FWS	FWS	FWS	SCT	SCT	ISOL
29	TELANGANA	WS	WS	FWS	FWS	SCT	SCT	SCT
30	RAYALASEEMA	SCT	SCT	SCT	SCT	SCT	ISOL	ISOL
31	TAMILNADU & PUDUCHERRY	SCT	ISOL	ISOL	ISOL	ISOL	ISOL	ISOL
32	COSTAL KARNATAKA	WS	WS	WS	WS	WS	WS	WS
33	NORTH INTERIOR KARNATAKA	WS	WS	FWS	FWS	FWS	SCT	SCT
34	SOUTH INTERIOR KARNATAKA	WS	WS	WS	FWS	FWS	SCT	SCT
35	KERALA AND MAHE	WS	WS	WS	WS	WS	WS	WS
36	LAKSHADWEEP	WS	WS	WS	WS	WS	WS	WS

- As the lead period increases forecast accuracy decrease.





- Action may be taken based on ORANGE AND REDCOLOUR warnings.
- Vulnerable regions likely urban and hilly areas action may be initiated for heavy rainfall warning.
- As the lead period increases forecast accuracy decreases.

Detailed districtwise Multi Hazard weather warning for next five days available at <https://mausam.imd.gov.in/responsive/districtWiseWarningGIS.php>

Weather forecast over Delhi/NCR during 23rd to 26th July 2025

Past Weather:

There has been no large change in the maximum and minimum temperatures over Delhi/NCR during the past 24 hours. The maximum and minimum temperatures over Delhi were around 31 to 33 °C and 24 to 27 °C, respectively. The minimum temperatures were below normal by 1 to 2 °C, and the maximum temperatures were below normal by 2 to 4 °C. Generally cloudy sky conditions with predominant surface wind from the southwest direction, with wind speeds up to 15 kmph, prevailed during the past 24 hours. Generally cloudy sky conditions with a windspeed of less than 15 kmph from the southwest direction prevailed over the region in the forenoon today.

Weather Forecast:

23.07.2025: Generally cloudy sky. Intermittent light rain/drizzle with possibility of occasional one or two moderate spells towards evening/night accompanied with thunderstorm/lightning. Light to Moderate rain accompanied by thunderstorms/lightning. The maximum temperatures over Delhi are likely to be in the range of 28 to 30°C. The maximum temperature will be below normal by 2 to 3°C. The predominant surface wind will likely be from the southwest direction with a wind speed of less than 15 kmph in the afternoon. The wind speed will gradually decrease, becoming 10-15 kmph from the southwest direction during evening and night.

24.07.2025: Generally cloudy sky. Very light to light rain accompanied by thunderstorms/lightning. The maximum and minimum temperatures over Delhi are likely to be in the range of 30 to 32°C and 23 to 25°C, respectively. The minimum temperature will be below normal up to 2 to 4°C, and the maximum temperature will be below normal by 2 to 3°C. The predominant surface wind will likely be from the west direction with a wind speed of less than 10 kmph during the morning hours. The wind speed will increase, becoming less than 15 kmph from the southwest direction in the afternoon. It will increase to less than 20 kmph from the west direction during the evening and night.

25.07.2025: Generally cloudy sky. Very light to light rain accompanied by thunderstorm/lightning. The maximum and minimum temperatures over Delhi are likely to be in the range of 31 to 33°C and 24 to 26°C, respectively. The minimum temperature will be below normal up to 1 to 2°C, and the maximum temperature will be below normal by 1 to 2°C. The predominant surface wind will likely be from the west direction with a wind speed of less than 20 kmph during the morning hours. The wind speed will gradually decrease, becoming less than 15 kmph from the west direction in the afternoon. It will decrease to less than 10 kmph from the west direction during the evening and night.

26.07.2025: Generally cloudy sky. Very light to light rain accompanied by thunderstorm/lightning. The maximum and minimum temperatures over Delhi are likely to be in the range of 32 to 34°C and 24 to 26°C, respectively. The minimum temperature will be below normal up to 1 to 2°C, and the maximum temperature will be below normal by 1 to 2°C. The predominant surface wind will likely be from the northwest direction with a wind speed of less than 10 kmph during the morning hours. The wind speed will remain less than 15 kmph from the west direction in the afternoon. It will decrease to less than 10 kmph from the west direction during the evening and night.

Impact expected and Action Suggested due to light to moderate rainfall with thunderstorm/lightning:

- Be cautious and take precautionary measures, though there is the likelihood of thunderstorms/lightning.
- Damage to standing crops, Minor to major damage to power and communication lines due to breaking of branches, Partial damage to vulnerable structures due to strong winds, Loose objects may fly.
- People are advised to keep a watch on the weather for worsening conditions and be ready to move to safer places accordingly, stay indoors, close windows & doors and avoid travel if possible, take safe shelters; do not take shelter under trees, do not lie on concrete floors and do not lean against concrete walls, unplug electrical/ electronic appliances, immediately get out of water bodies, keep away from all the objects that conduct electricity.

Impact & Action Suggested

- ✓ **Extremely heavy falls** very likely at isolated places over Coastal Karnataka during 23rd-25th; Konkan and ghat areas of Madhya Maharashtra on 24th & 25th and Odisha on 25th July
- ✓ Isolated **very heavy rainfall** likely over Kerala & Mahe, Coastal & South Interior Karnataka, Coastal Andhra Pradesh & Yanam during 23rd-27th; West Madhya Pradesh during 26th-28th; East Madhya Pradesh during 25th-28th; Vidarbha, Jharkhand during 25th-27th; Chhattisgarh, Odisha during 24th-26th; Gangetic West Bengal on 24th & 25th; Jammu-Kashmir on 23rd and East Rajasthan & Gujarat Region on 27th & 28th July.

Impact Expected

- Localized Flooding of roads, water logging in low lying areas and closure of underpasses mainly in urban areas of **(Rajasthan and West Madhya Pradesh)** the above region.
- Occasional reduction in visibility due to heavy rainfall.
- Disruption of traffic in major cities due to water logging in roads leading to increased travel time.
- Minor damage to kutcha roads.
- Possibilities of damage to vulnerable structure.
- Localized Landslides/Mudslides/landslips/mudslips/landsinks/mudsinks.
- Damage to horticulture and standing crops in some areas due to inundation.
- It may lead to riverine flooding in some river catchments (for riverine flooding please visit Web page of CWC)

Action Suggested

- Check for traffic congestion on your route before leaving for your destination.
- Follow any traffic advisories that are issued in this regard.
- Avoid going to areas that face the water logging problems often.
- Avoid staying in vulnerable structure.

Agromet advisories for likely impact of Heavy / Heavy to Very Heavy Rainfall

- In **Telangana**, postpone sowing of rice nurseries in **Southern Telangana** and transplanting of rice in **Northern Telangana**. Ensure proper drainage facilities from the fields of paddy, maize, groundnut, cotton, soybean, red gram and vegetables.
- In **Maharashtra**, make arrangement to drain out excess water from paddy and finger millet nurseries, groundnut, vegetables and orchards in **Konkan** and rice and finger millet nurseries in **ghat areas** of **Madhya Maharashtra**. Provide adequate drainage facilities in fields of soybean, cotton, pigeon pea, sorghum, maize, green gram, black gram and turmeric in **Vidarbha**.
- In **Jammu & Kashmir**, provide adequate drainage facilities in fields of maize, green gram, vegetables and transplanted rice in **Sub Tropical Zone**. In **Intermediate Zone**, postpone intercultural operations in maize and vegetables. Make arrangement to drain out excess water from the maize, vegetables and pulses.
- In **Uttarakhand**, maintain proper drainage channels in fields of rice in **Bhabar and Tarai Zone** and black gram in **Hill Zone**. Make necessary arrangements to drain out excess water from barnyard millet, finger millet, cucumber and rice fields in **Sub Humid SubTropic Zone**.
- In **Himachal Pradesh**, make proper drainage channels in the standing crops like maize, finger millet and vegetable fields. Provide staking to tall and leguminous crops and cucumber vines. In **Mid Hills Sub Humid Zone**, undertake harvesting of matured tomato, brinjal, capsicum and fruits and keep the harvested produce at safer places.
- In **Kerala**, provide adequate drainage in fields of paddy, coconut, banana and ginger. Postpone nursery / transplanting of rice. Provide staking in vegetables.
- In **Karnataka**, postpone nursery sowing of rice and provide drainage in arecanut fields and banana orchards in **Coastal Zone**. In **Hill Zone**, make arrangements to drain out excess water from rice nurseries, fields of maize, cotton, ginger and plantations of arecanut. In **Southern Transition Zone**, provide proper drainage in arecanut and coconut fields. In **Southern Dry Zone**, provide staking / support to maize, tomato and banana crop. Ensure proper drainage to prevent waterlogging especially in rice, vegetables and spice crops. Cover young seedlings in rice nurseries and vegetables with coverings like plastic sheets or agro-shade nets.
- In **Coastal Andhra Pradesh**, ensure proper drainage channels in fields of maize and direct seeded rice in **Krishna Godavari Zone**.
- In **Chhattisgarh**, drain out excess water from rice nurseries, soybean, red gram, green gram, black gram, sugarcane and vegetables in Plain Zone. In Northern Hill Zone, postpone fresh transplanting of rice in low lands. Drain out excess water from transplanted rice and vegetables. Undertake staking / propping in banana and papaya. In Bastar Plateau Zone, drain out excess water from rice, minor millets, maize, pulses and oilseeds.
- **Madhya Pradesh**, provide adequate drainage to soybean, cotton, maize, black gram and vegetables in **Jhabua Hill Zone**. In **Gird Zone**, provide adequate drainage in soybean and red gram.
- In **Odisha**, drain out excess water from rice nurseries and fields of transplanted rice, maize, pulses, vegetable and plantation crops.

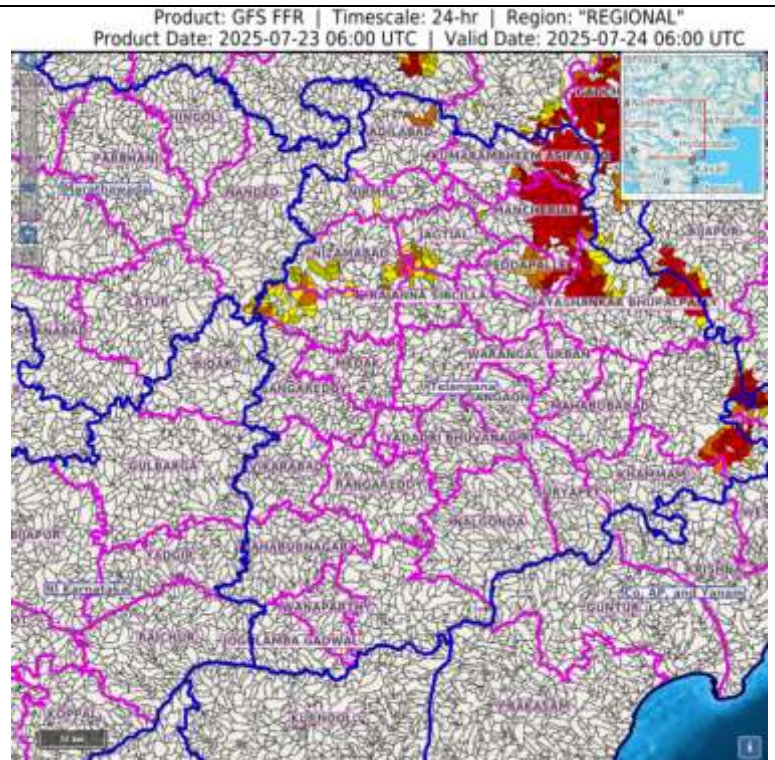
Flash flood guidance:

24 hours Outlook for the Flash Flood Risk (FFR) till 1130 IST of 24-07-2025 :

Moderate to high flash flood risk likely over few watersheds & neighbourhoods of following Met Sub-divisions during next 24 hours.

Telangana – Bhadradi Kothagudem, Jayashankar Bhupalpally, Peddapalle, Mancherla, Kumarambheem Asifabad, Jagityal, Adilabad, Nizamabad and Kamareddy districts.

Surface runoff/ Inundation may occur at some fully saturated soils & low-lying areas over Area of Concern (AoC) as shown in map due to expected rainfall occurrence in next 24 hours.



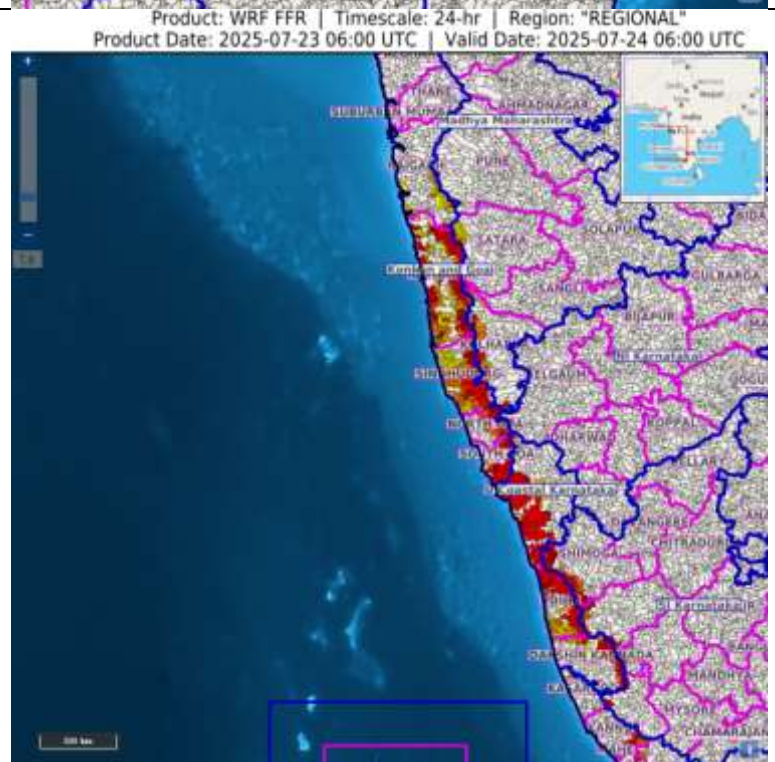
24 hours Outlook for the Flash Flood Risk (FFR) till 1130 IST of 24-07-2025:

Low to Moderate flash flood risk likely over few watersheds & neighbourhoods of following Met Sub-divisions during next 24 hours.

Coastal Karnataka - Dakshin Kannada, Udupi and Uttar Kannada districts.

Konkan & Goa – North Goa, South Goa, Sindhudurg, Ratnagiri and Raigarh districts.

Surface runoff/ Inundation may occur at some fully saturated soils & low-lying areas over Area of Concern (AoC) as shown in map due to expected rainfall occurrence in next 24 hours.



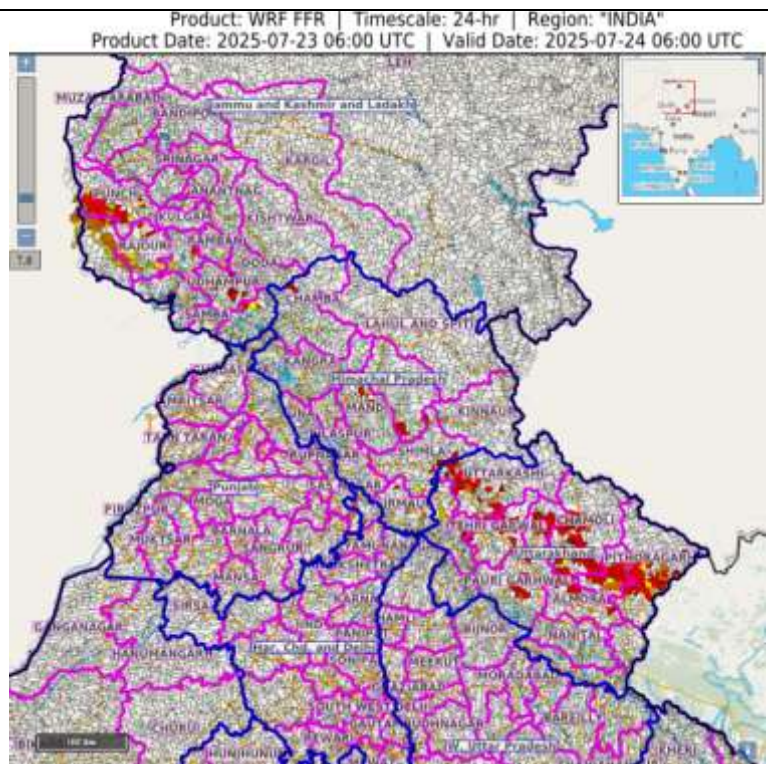
24 hours Outlook for the Flash Flood Risk (FFR) till 1130 IST of 24-07-2025 :

Low to Moderate flash flood risk likely over few watersheds & neighbourhoods of following Met Sub-divisions during next 24 hours.

Jammu & Kashmir –Punch, Rajouri, Ramban, Udhampur, Doda, Reasi and Kathua districts.

Himachal Pradesh – Chamba, Mandi, Kullu, Sirmour and Shimla districts.

Uttarakhand – Dehradun, Uttarakashi, Tehri Garwal, Pauri Garwal, Rudrapur, Chamoli, Bageswar, Almora and Pithoragarh districts
Surface runoff/ Inundation may occur at some fully saturated soils & low-lying areas over Area of Concern (AoC) as shown in map due to expected rainfall occurrence in next 24 hours.



Legends & abbreviations:

- ❖ **Heavy Rain:**64.5-115.5mm; **Very Heavy Rain:**115.6-204.4mm; **Extremely Heavy Rain:** >204.4mm.
- ❖ **Obsy:** Observatory; Automatic Weather Station; **ARG:** Automatic Rain Gauge; **dist:** District; **NH:** National Highway; **KVK:** Krishi Vigyan Kendra; **DVC:** Damodar Valley Corporation; **PTO:** Part Time Office, **Aero:** Aerodrome, **IAF:** Indian Air Force.
- ❖ **Region wise classification of meteorological Sub-Divisions:**
 - **Northwest India:** Western Himalayan Region (Jammu-Kashmir-Ladakh-Gilgit-Baltistan-Muzaffarabad, Himachal Pradesh and Uttarakhand); Punjab, Haryana-Chandigarh-Delhi; West Uttar Pradesh, East Uttar Pradesh, West Rajasthan and East Rajasthan.
 - **Central India:** West Madhya Pradesh, East Madhya Pradesh, Vidarbha and Chhattisgarh.
 - **East India:** Bihar, Jharkhand, Sub-Himalayan West Bengal & Sikkim; Gangetic West Bengal, Odisha and Andaman & Nicobar Islands.
 - **Northeast India:** Arunachal Pradesh, Assam & Meghalaya and Nagaland, Manipur, Mizoram & Tripura.
 - **West India:** Gujarat Region, Saurashtra & Kutch, Konkan & Goa, Madhya Maharashtra and Marathwada.
 - **South India:** Coastal Andhra Pradesh & Yanam, Telangana, Rayalaseema, Coastal Karnataka, North Interior Karnataka, South Interior Karnataka, Kerala & Mahe, Tamil Nadu, Puducherry & Karaikal and Lakshadweep.

LEGENDS

1. अंडमान और निकोबार द्वीपसमूह

2. अरुणाचल प्रदेश

3. असम और मेघालय

4. नागालैंड, मणिपुर, मिजोरम और त्रिपुरा

5. उप-हिमालयी पश्चिम बंगाल और सिक्किम

6. गंगीय पश्चिम बंगाल

7. ओडिशा

8. झारखंड

9. बिहार

10. पूर्वी उत्तर प्रदेश

11. पश्चिम उत्तर प्रदेश

12. उत्तराखंड

13. हरियाणा, चंडीगढ़ और दिल्ली

14. पंजाब

15. हिमाचल प्रदेश

16. जम्मू और कश्मीर और लद्दाख

17. पश्चिम राजस्थान

18. पूर्वी राजस्थान

19. पश्चिम मध्य प्रदेश

20. पूर्वी मध्य प्रदेश

21. गुजरात

22. सौराष्ट्र

23. कोंकण और गोवा

24. मध्य महाराष्ट्र

25. मराठवाड़ा

26. विदर्भ

27. छत्तीसगढ़

28. तटीय आंध्र प्रदेश और यनम

29. तेलंगाना

30. रायलसीमा

31. तमिलनाडु, पुडुचेरी और कराईकल

32. तटीय कर्नाटक

33. आंतरिक उत्तरी कर्नाटक

34. आंतरिक दक्षिणी कर्नाटक

35. केरल और माहे

36. लक्षद्वीप



1. Andaman & Nicobar Islands

2. Arunachal Pradesh

3. Assam & Meghalaya

4. Nagaland, Manipur, Mizoram & Tripura

5. Sub-Himalayan West Bengal & Sikkim

6. Gangetic West Bengal

7. Odisha

8. Jharkhand

9. Bihar

10. East Uttar Pradesh

11. West Uttar Pradesh

12. Uttarakhand

13. Haryana, Chandigarh & Delhi

14. Punjab

15. Himachal Pradesh

16. Jammu & Kashmir and Ladakh

17. West Rajasthan

18. East Rajasthan

19. West Madhya Pradesh

20. East Madhya Pradesh

21. Gujarat

22. Saurashtra

23. Konkan & Goa

24. Madhya Maharashtra

25. Marathwada

26. Vidarbha

27. Chhattisgarh

28. Coastal Andhra Pradesh & Yanam

29. Telangana

30. Rayalaseema

31. Tamilnadu, Puducherry & Karaikal

32. Coastal Karnataka

33. North Interior Karnataka

34. South Interior Karnataka

35. Kerala & Mahe

36. Lakshadweep

SPATIAL DISTRIBUTION (% of Stations reporting)

% Stations	Category	% Stations	Category
76-100	Widespread (WS/Most Places)	26-50	Scattered (SCT/A Few Places)
51-75	Fairly Widespread (FWS/Many Places)	1-25	Isolated (ISOL)



Fog



Heavy Snow



Cold Wave



Heavy Rain



Dust Storm



Cold Day



Very Heavy Rain



Heat Wave



Ground Frost



Extremely Heavy Rain



Warm Night



Thunder & Lightning



Hot Day



Hailstorm



Hot & Humid



Dust Raising Winds



Strong Surface Winds

COLOUR CODED WARNING

No Warning (No Action)

Watch (Be Aware)

Alert (Be Prepared To Take Action)

Warning (Take Action)

Probabilistic Forecast

Terms	Probability of Occurrence (%)
Unlikely	< 25
Likely	25 - 50
Very Likely	50 - 75
Most Likely	> 75

* Red colour warning does not mean "Red Alert", Red colour warning means "Take Action".

Forecast and Warning for any day is valid from 0830 hours IST of day till 0830 hours IST of next day.

For more details, kindly visit <https://mausam.imd.gov.in> or contact: 011-2434-4599

(Service to the Nation since 1875)

DEFINITION/CRITERIA

Rain/ Snow *

Heavy: 64.5 to 115.5 mm/cm *
Very Heavy: 115.6 to 204.4 mm/cm *
Extremely Heavy: > 204.4 mm/cm *

Heat Wave

When maximum temperature of a station reaches $\geq 40^{\circ}\text{C}$ for plains and $\geq 30^{\circ}\text{C}$ for hilly regions
(a) Based on Departure from normal

Heat Wave: Maximum Temperature Departure from normal 4.5°C to 6.4°C .

Severe Heat Wave: Maximum Temperature Departure from normal $\geq 6.5^{\circ}\text{C}$

(b). Based on Actual maximum temperature

Heat Wave: When actual maximum temperature $\geq 45^{\circ}\text{C}$.

Severe Heat Wave: When actual maximum temperature $\geq 47^{\circ}\text{C}$.

(c). Criteria for heat wave for coastal stations

When maximum temperature departure is $> 4.5^{\circ}\text{C}$ from normal. Heat Wave may be described provided maximum temperature $\geq 37^{\circ}\text{C}$.

Warm Night

When maximum temperature remains 40°C

Warm Night: When minimum temperature departure 4.5°C to 6.4°C .

Severe Warm Night: When minimum temperature departure $> 6.4^{\circ}\text{C}$.

Cold Wave

When minimum temperature of a station $\leq 10^{\circ}\text{C}$ for plains and $\leq 0^{\circ}\text{C}$ for hilly regions.

(a). Based on departure

Cold Wave: Minimum Temperature Departure from normal -4.5°C to -6.4°C .

Severe Cold Wave: Minimum Temperature Departure from normal $\leq -6.5^{\circ}\text{C}$

(b) Based on actual Minimum Temperature (for Plains only)

Cold Wave: When Minimum Temperature is $\leq 4.0^{\circ}\text{C}$

Severe Cold Wave: When Minimum Temperature is $\leq 2.0^{\circ}\text{C}$

(c) For Coastal Stations

When Minimum Temperature departure is $\leq -4.5^{\circ}\text{C}$ & actual Minimum Temperature is $\leq 15^{\circ}\text{C}$

Cold Day

When minimum temperature of a station $\leq 10^{\circ}\text{C}$ for plains and $\leq 0^{\circ}\text{C}$ for hilly regions

Based on departure

Cold Day: Maximum Temperature Departure from normal -4.5°C to -6.4°C .

Severe Cold Day: Maximum Temperature Departure from normal $\leq -6.5^{\circ}\text{C}$

Fog

Phenomenon of small droplets suspended in air and the horizontal visibility $< 1\text{km}$

Moderate Fog: When the visibility between 500-200 metres

Dense Fog: when the visibility between 50- 200 metres

Very Dense Fog: when the visibility < 50 metres

Thunderstorm

Sudden electrical discharges manifested by a flash of light (Lightning) and a sharp rumbling sound (thunder)

Dust/Sand Storm

An ensemble of particles of dust or sand energetically lifted to great heights by a strong and turbulent wind.

Frost

Ice deposits on ground

Air temperature $\leq 4^{\circ}\text{C}$ (over Plains)

Squall

A strong wind that rises suddenly, lasts for atleast 1 minute.

Moderate: Wind speed 52-61 kmph

Severe: Wind speed 62-67 kmph

Very Severe: Wind speed > 67 kmph

Sea State

Effect of various waves in the sea over specific area

Rough to very rough: Wind speed 41-62 kmph (22-33 knots) & Wave height 2.5-6 metre

High to very high: Wind speed 63-117 kmph (34-63 knots) & Wave height 6-14 metre

Phenomenal: Wind speed > 117 kmph (> 63 knots) & Wave height > 14 metre

Cyclone

Cyclonic Storm: Wind speed 62-87 kmph (34-47 knots)

Severe Cyclonic Storm: Wind speed 88-117 kmph (48-63 knots)

Very Severe Cyclonic Storm: Wind speed 118-165 kmph (64 - 89 knots)

Extremely Severe Cyclonic Storm: Wind speed 166-220 kmph (90 -119 knots)

Super Cyclone Storm: Wind speed > 220 kmph (> 119 knots)

* Red colour warning does not mean "Red Alert", Red colour warning means "Take Action".

Forecast and Warning for any day is valid from 0830 hours IST of day till 0830 hours IST of next day.

For more details, kindly visit <https://mausam.imd.gov.in> or contact: 011-2434-4599

(Service to the Nation since 1875)

Hot and Humid: When maximum temperatures remain 3°C above normal along with the above normal relative humidity.